

Membership Offers You Great Value, Including:

| | |
|--|---------------------|
| Subscription to <i>Pharmaceutical Engineering</i> magazine | \$79 / €79 |
| Discounts on ISPE Baseline® Guides | \$310 / €260 |
| Online networking with Communities of Practice (CoPs) | \$85 / €82 |
| Access to online Member Directory | \$75 / €72 |
| Free Affiliate/Chapter membership | \$95 / €91 |
| ISPE Drug Shortage Assessment and Prevention Tool | \$199 / €190 |
| Total Value | \$843 / €774 |
| Total Cost to You | \$289 / €244 |

2017 Annual Dues Rates

| | |
|---------------------------|--|
| Industry | \$289 / €244 |
| Academic/Regulator | \$119 / €99 |
| Young Professional | \$119 / €99 |
| Student | \$25 / €25 |
| Emerging Economy Industry | Tier 2: \$179 / €149 Tier3: \$119 / €99 |
| Emerging Economy Student | \$5 / €5 |

www.ISPE.org/Join



About ISPE

ISPE, the International Society for Pharmaceutical Engineering, was founded in 1980 and is the largest not-for-profit association providing technical and regulatory support to members throughout the entire pharmaceutical lifecycle. Our 19,000+ members, located in more than 90 countries around the globe, are dedicated to the development and manufacture of safe and effective pharmaceutical and biologic medicines and medical delivery devices.

WORLDWIDE HEADQUARTERS

7200 Wisconsin Avenue, Suite 305
Bethesda, MD 20814-4811 USA

OPERATIONS AND TRAINING CENTER

600 N Westshore Boulevard, Suite 909
Tampa, FL 33609-1114 USA

Phone: +1-813-960-2105
Email: ask@ISPE.org

www.ISPE.org



Get the
Knowledge
You Need to
Succeed

Connecting
Pharmaceutical
Knowledge

ISPE Membership Benefits YOU

Become the Expert in Your Field

ISPE's library of **Guidance Documents**, the gold-standard in the industry, **arm you with best practices** from good engineering practices and biopharmaceuticals to facility design and sustainability.

Pharmaceutical Engineering magazine, the preeminent news source for members, **enriches you with updates** on scientific and technical developments along with real-world solutions for the challenges you face every day.



Network Globally

As a member, you will join more than 19,000 of your professional peers worldwide in **advancing the solutions that lead to improved human health**. Connect locally with your Affiliate or Chapter, then utilize the Member Directory to find contacts globally. Join a Community of Practice for **answers to your most pressing questions** and to get involved in the development of topic-specific solutions.

Advance Your Education

International conferences, in-person training, and online training offered throughout the year give you ample opportunities to **stay current on the latest advancements and regulatory changes**. Topics range from GAMP®5 GxP Computerized Systems to Continuous Manufacturing and HVAC Practical Guidance.

Save More and Get More

Members-only **discounts more than cover the price of annual dues**, including savings on the vast array of publications, conferences, and training. Members also have exclusive access to the **ISPE Career Solutions Online Job Board**, where you can look for that next career move or post an opening for your next great employee.



www.ISPE.org/Join



Connecting Pharmaceutical Knowledge

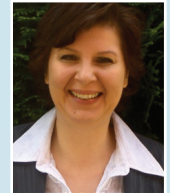
Here's what your colleagues say about the value of ISPE membership...



"We strongly encourage colleagues to participate in ISPE education and training programs to build the capabilities necessary to keep the network and Pfizer competitive."

Chaz Calitri, VP Global Engineering, Pfizer, Collegeville, PA USA

"It is very convenient to be able to learn at your desk, at your own pace, using ISPE e-learning courses."



Bernadette De Leye, Project Manager, STEXCON, Haasrode Belgium



"ISPE gives industry professionals access to an unparalleled network and access to educational opportunities within the pharma/biotech community."

Terence Morrison, PE, Owner, Acropolis Controls Engineers, Raleigh, NC USA

"Every time I meet a new student or young professional, I say this is where you're going to meet that person who is going to answer the phone when you have that question that's going to change your career."



Tiffany Coleman, Relationship Manager, Sequence Inc., Kansas City, MO USA